



# GP series GP 672



## Valve Regulated Lead Acid Battery

Maintenance-Free Sealed Lead Acid Battery.  
Absorbent Glass Mat (AGM) technology for efficient gas recombination of up to 99%.

### General Design for Standby Power Applications

#### 【Design Life】

Up to 5 Years in Standby Service at 25°C  
Eurobat (20°C) : 3-5 YEARS STANDARD COMMERCIAL

#### 【Operating Temperature Range】

Nominal Operating Temperature : 25°C (77°F)  
Discharge : -15°C ~ 50°C (5°F~122°F)  
Charge: -15°C ~ 40°C (5°F~104°F)  
Storage: -15°C ~ 40°C (5°F~104°F)

#### 【Float Charging Voltage】

6.75 ~ 6.90 VDC/Unit at 25°C (77°F)

#### 【Equalization Charging Voltage】

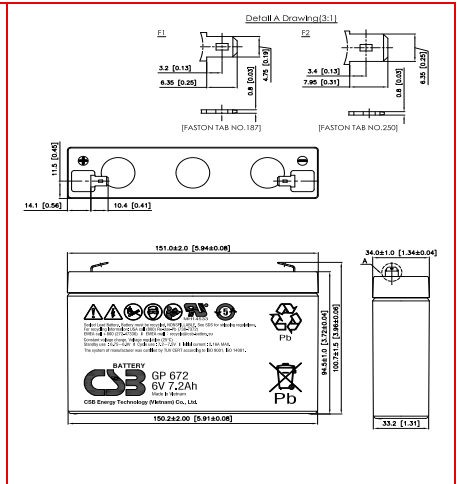
7.2 ~ 7.5 VDC/Unit at 25°C (77°F)

#### 【Self Discharge】

Less than 10% after 90 days, can be stored up to 6 months at 25°C (77°F);  
Fully recharging is required before usage, and charged sooner if stored at higher temperature than 25°C (77°F).

### Specification Design according with IEC 61056-1/2:2012

Nominal Voltage	6V (3 cells per unit)		
Nominal Capacity	7.2 Ah @20hr-rate to 1.75V per cell @25°C (77°F)		
Weight	Approx. 1.22 Kg (2.68 lbs)		
Maximum Discharge Current	100/130A (5sec)		
Internal Resistance	Approx. 12.3mΩ		
Short Circuit Current	259A		
Maximum Charge Current	2.16A		
Terminal types	F1/F2 terminal -Faston Tab 187/250		
Terminal tightening torque	--		
Container Material	ABS (UL 94-HB) & Flame Retardant (94-V0) available upon request		
Dimensions	Length (L)	151.0±2.0 mm	5.94±0.08 inch
	Width (W)	34.0±1.0 mm	1.34±0.04 inch
	Container Height (h)	94.5±1.0 mm	3.72±0.04 inch
	Overall Height (H)	100.7±1.5 mm	3.96±0.06 inch



### Constant Current Discharge Characteristics Unit: A (25°C, 77°F)

F.V/Time	5 MIN	10MIN	15MIN	30MIN	60MIN	90MIN	2HR	3HR	5HR	8HR	10HR	20HR
1.60V	35.6	22.0	16.5	9.6	5.51	3.92	3.08	2.13	1.34	0.92	0.77	0.45
1.67V	33.1	21.0	15.9	9.4	5.41	3.85	3.02	2.08	1.31	0.90	0.76	0.44
1.70V	31.9	20.5	15.6	9.2	5.37	3.82	3.00	2.06	1.30	0.89	0.75	0.43
1.75V	29.6	19.6	15.1	9.0	5.30	3.77	2.96	2.02	1.27	0.88	0.74	0.42
1.80V	27.2	18.6	14.4	8.8	5.23	3.71	2.91	1.98	1.25	0.87	0.73	0.41
1.85V	24.5	17.4	13.7	8.4	5.14	3.66	2.87	1.95	1.22	0.86	0.71	0.40

### Constant Power Discharge Characteristics Unit: W (25°C, 77°F)

F.V/Time	5MIN	10MIN	15MIN	30MIN	60MIN	90MIN	2HR	3HR	5HR	8HR	10HR	20HR
1.60V	180	123	91.4	53.9	32.2	23.5	18.8	13.3	8.62	5.87	4.90	2.68
1.67V	170	118	88.7	52.9	31.8	23.2	18.5	13.2	8.50	5.80	4.84	2.63
1.70V	165	115	87.2	52.4	31.6	23.1	18.4	13.1	8.45	5.76	4.77	2.61
1.75V	157	111	85.0	51.6	31.2	22.8	18.2	13.0	8.36	5.70	4.73	2.57
1.80V	147	106	82.3	50.6	30.9	22.5	18.0	12.8	8.27	5.65	4.70	2.53
1.85V	138	101	79.2	49.5	30.4	22.1	17.7	12.6	8.16	5.60	4.64	2.49

Please refer to the official site for the latest rating confirmation. URL: [www.csb-battery.com](http://www.csb-battery.com)

Issued: 200928

### Sales Offices

希世比能源科技股份有限公司  
CSB Energy Technology Co., Ltd.

#### BUSINESS HEADQUARTERS

Tel: +886-2-2880-5600  
Fax: +886-2-2888-3300

#### USA OFFICE

Tel: +1-817-244-7777 / 1-(800)3-CSB-USA (272872)  
Fax: +1-817-244-4445

#### SHENZHEN OFFICE (CHINA)

Tel: +86-755-8831-6488/6775/6075  
Fax: +86-755-8831-6548

#### EUROPE (EMEA) OFFICE

Tel: +31(0)180-418-140  
Fax: +31(0)180-418-327

#### SHANGHAI OFFICE (CHINA)

Tel: +86-21-5046-1622/0833/0094  
Fax: +86-21-5046-1046

Recognized under UL 1989,  
and certified by ISO 9001, 14001, 45001, 50001.



#### TAIPEI OFFICE

Tel: +886-2-2880-5600  
Fax: +886-2-2888-3300

#### BEIJING OFFICE (CHINA)

Tel: +86-10-6597-8065/8165/8265  
Fax: +86-10-6597-8565